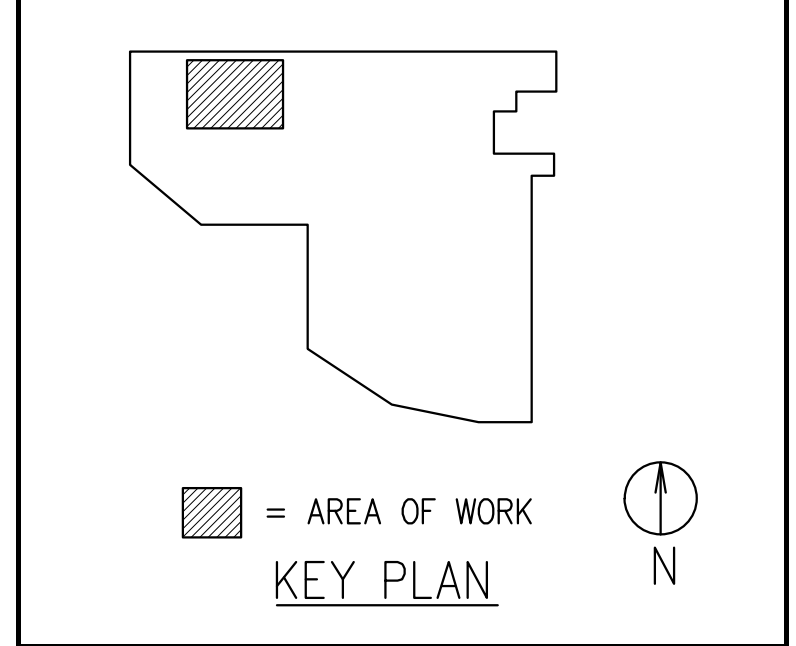


OC ON CENTER  
STEEL DETAILING LLC  
OCSTEELDETAILING@GMAIL.COM

FOR FABRICATION:  
10/7/2016

REFERENCE DESIGN DRAWINGS:  
A-0.52, S-101.02, S-201.00

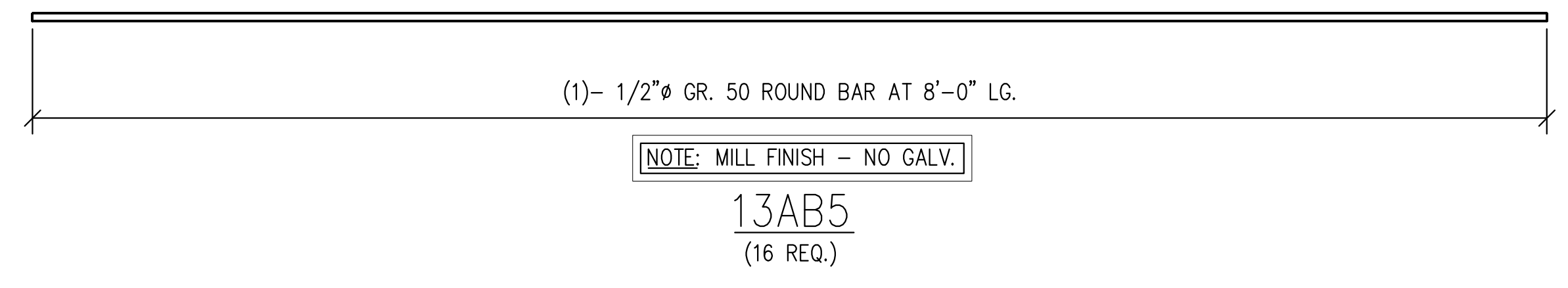
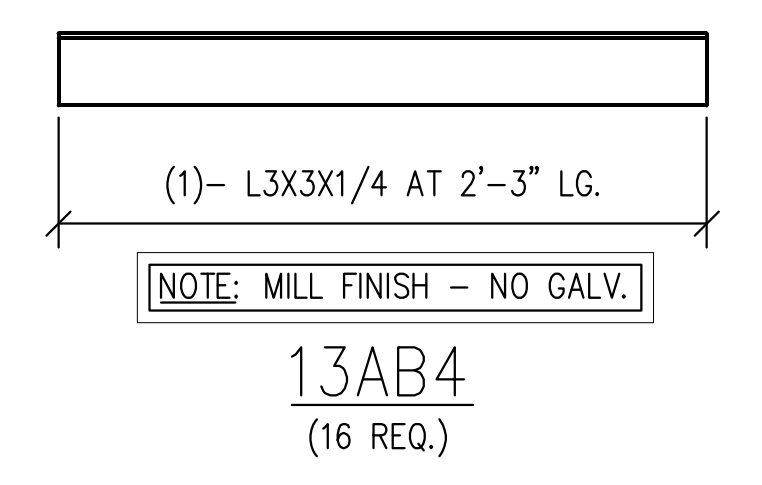
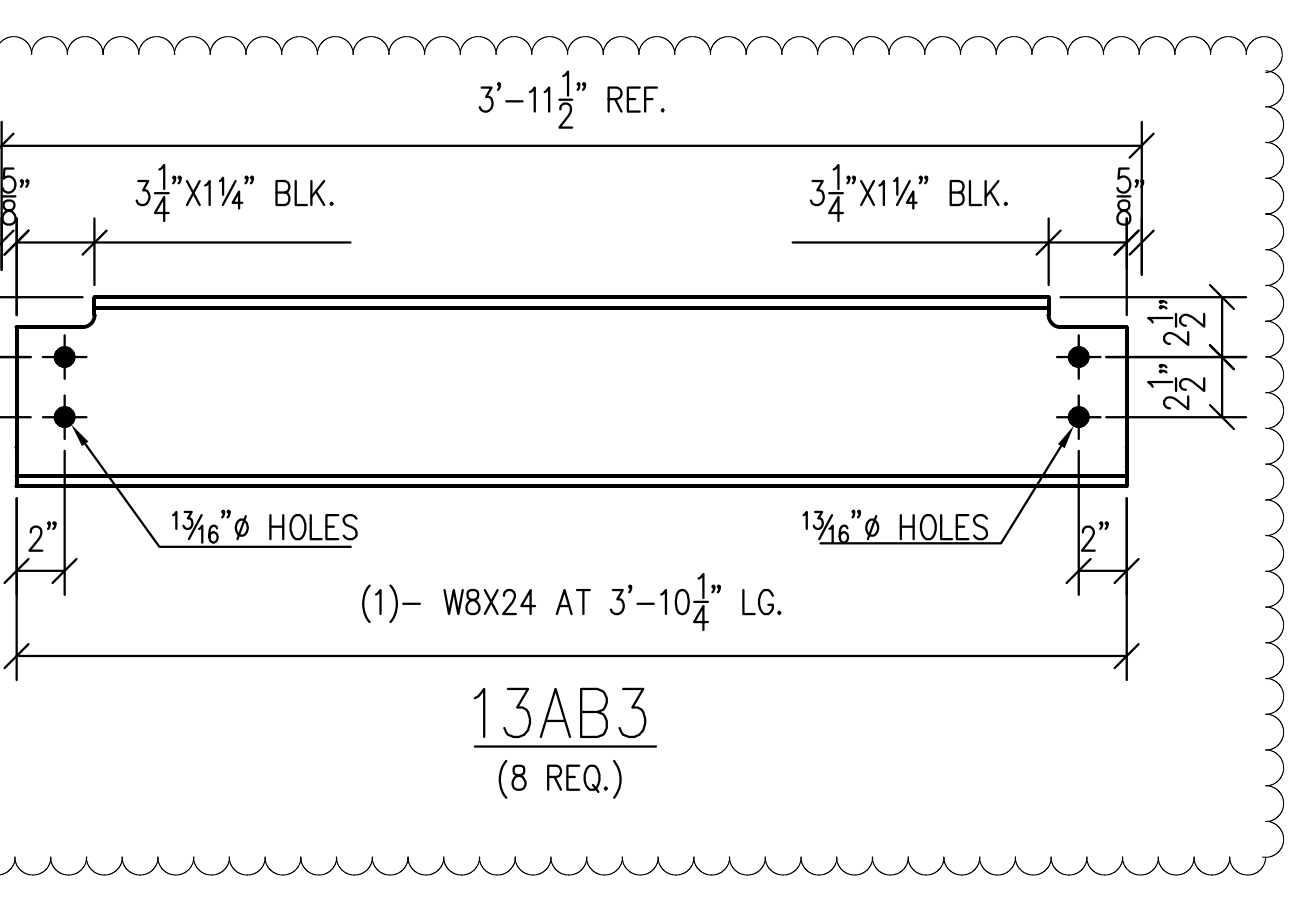
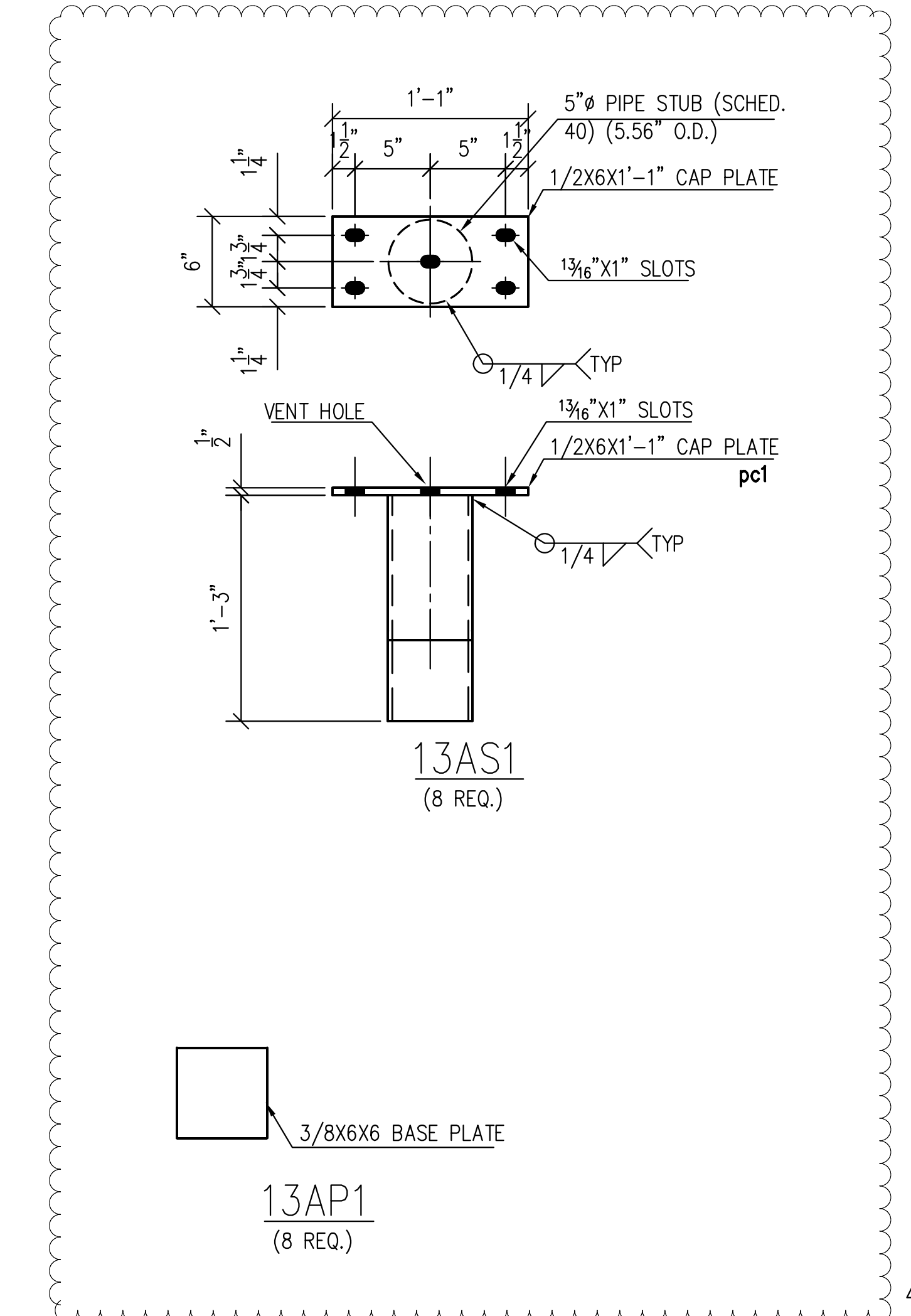
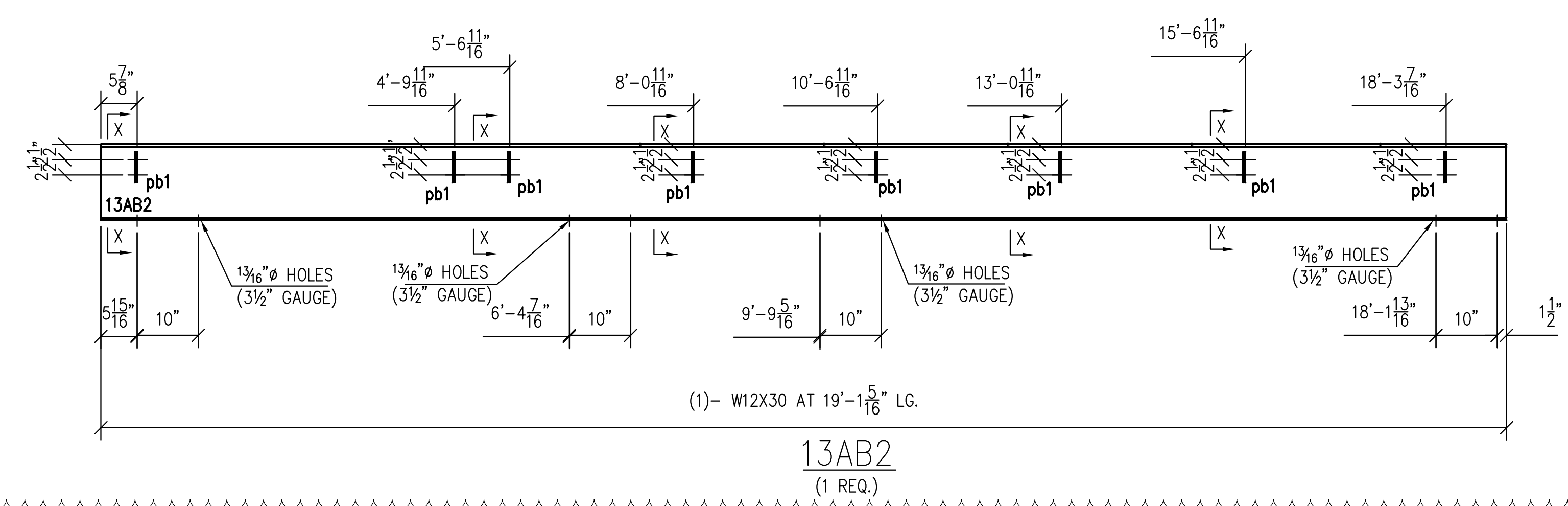
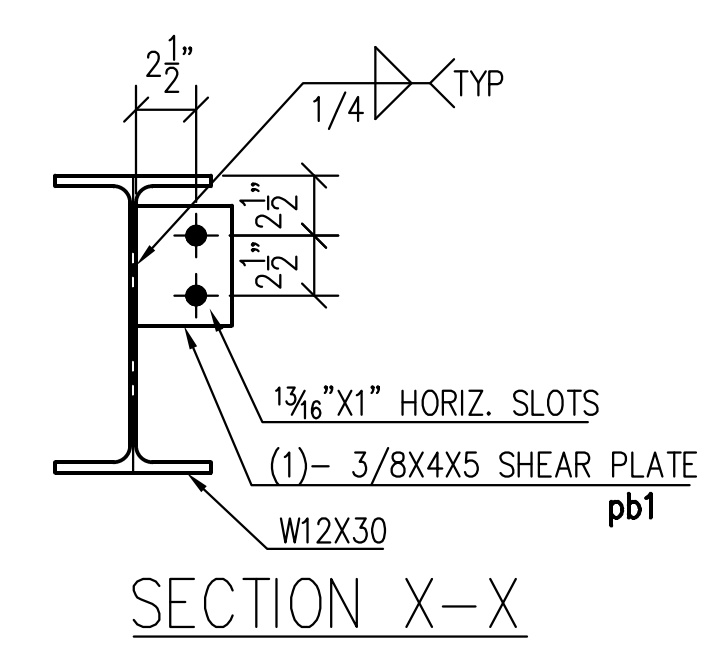
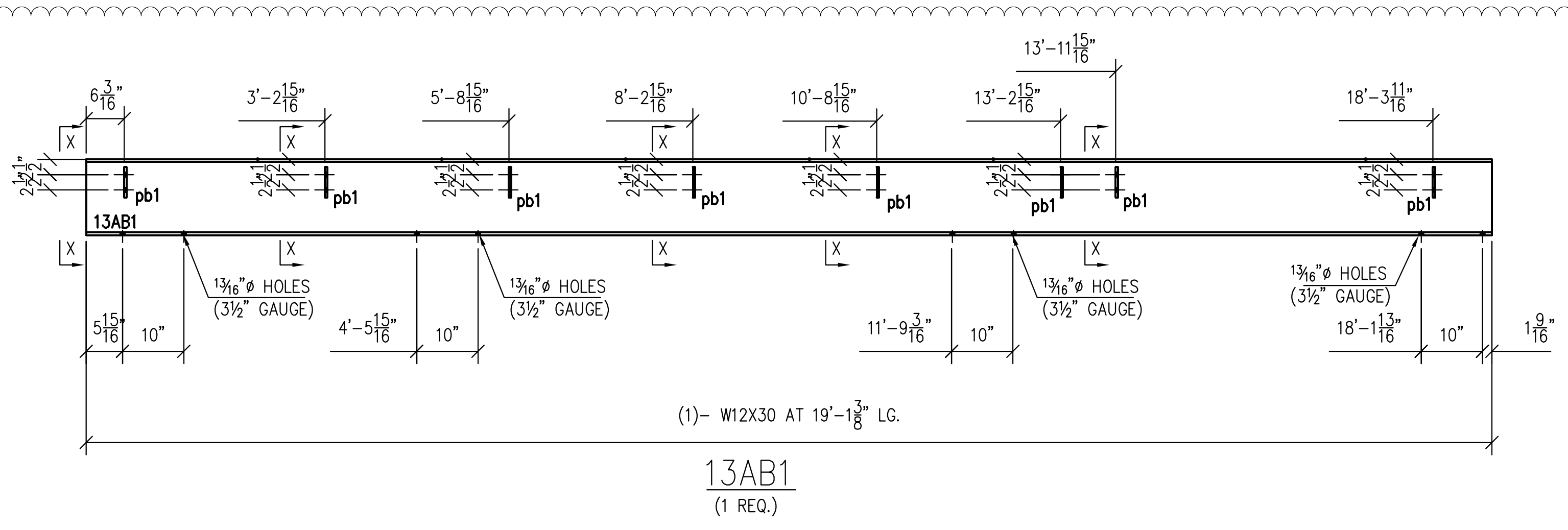


- GENERAL NOTES:
1. V.I.F. INDICATES DIMENSION TO BE VERIFIED IN FIELD
  2. F.V. INDICATES FIELD VERIFIED DIMENSION
  3. ALL CHANNELS, ANGLES, AND PLATES TO BE ASTM A36 U.O.N.
  4. ALL WIDE FLANGE SECTIONS TO BE ASTM A992 U.O.N.
  5. ALL HSS SECTIONS TO BE ASTM A500 GRADE B U.O.N.
  6. ALL PIPE TO BE ASTM A53 U.O.N.
  7. ALL MECHANICAL TUBE TO BE ASTM A513 U.O.N.

REVISION	DESCRIPTION	DATE	BY
1	SHOP DRAWINGS FOR FABRICATION & ERECTION	10/7/2016	TS
0	SHOP DRAWINGS FOR APPROVAL	9/15/2016	TS

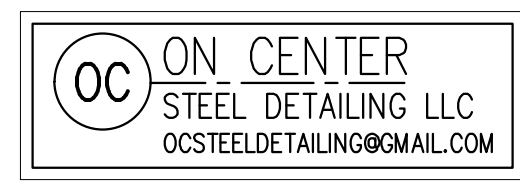
MATERIAL: SEE GENERAL NOTES	BOLTS 3/4" A325 U.O.N.	UNO
WELDS: E70XX ELECTRODES	UNO	PAINT HOT-DIPPED GALVANIZED UNO
PROJECT NAME: FRESH DIRECT - HARELEM RIVER YARDS		
CUSTOMER: FRESH DIRECT		GENERAL CONTRACTOR:
DRAWN BY: TS	DATE: 9/14/16	CHKD BY: -
JOB No. 1614	DRG No. M13-1	REV. 1



BILL OF MATERIALS					
REQ.	PC. MARK	SHAPE	LENGTH	REMARKS	
1	13AB1	W12X30	19'	1 3/8"	ASTM A992
8	pb1	PL3/8X4	0'	5"	ASTM A36
1	13AB2	W12X30	19'	1 5/8"	ASTM A992
8	pb1	PL3/8X4	0'	5"	ASTM A36
8	13AB3	W8X24	3'	10 1/4"	ASTM A992
16	13AB4	L3X3X1/4	2'	3"	ASTM A36
16	13AB5	1/2"Ø ROUND BAR	8'	0"	A572 GR. 50
8	13AS1	5"Ø PIPE (SCH. 40)	1'	3"	ASTM A500
8	pc1	P1/2X6	1'	1"	ASTM A36
8	13AP1	P3/8X6	0'	6"	ASTM A36
32	FIELD BOLT	3/4"Ø A325 GALV.	0'	2"	SHIP LOOSE
32	FIELD BOLT	3/4"Ø A325 GALV.	0'	2 1/4"	SHIP LOOSE

- GENERAL NOTES:
- V.I.F. INDICATES DIMENSION TO BE VERIFIED IN FIELD
  - F.V. INDICATES FIELD VERIFIED DIMENSION
  - ALL CHANNELS, ANGLES, AND PLATES TO BE ASTM A36 U.O.N.
  - ALL WIDE FLANGE SECTIONS TO BE ASTM A992 U.O.N.
  - ALL HSS SECTIONS TO BE ASTM A500 GRADE B U.O.N.
  - ALL PIPE TO BE ASTM A53 U.O.N.
  - ALL MECHANICAL TUBE TO BE ASTM A513 U.O.N.

REVISION	DESCRIPTION	DATE	BY
1	SHOP DRAWINGS FOR FABRICATION & ERECTION	10/7/2016	TS
0	SHOP DRAWINGS FOR APPROVAL	9/15/2016	TS



FOR FABRICATION:  
10/7/2016

REFERENCE DESIGN DRAWINGS:  
A-0.52, S-101.02, S-201.00

MATERIAL: SEE GENERAL NOTES	BOLTS 3/4"Ø A325 U.O.N.	UNO
WELDS: E70XX ELECTRODES	UNO	PAINT HOT-DIPPED GALVANIZED UNO
PROJECT NAME: FRESH DIRECT - HARELEM RIVER YARDS		
CUSTOMER: FRESH DIRECT		GENERAL CONTRACTOR:
DRAWN BY: TS	DATE: 9/14/16	CHKD BY: -
JOB No. 1614	DRG No. 13A	REV. 1